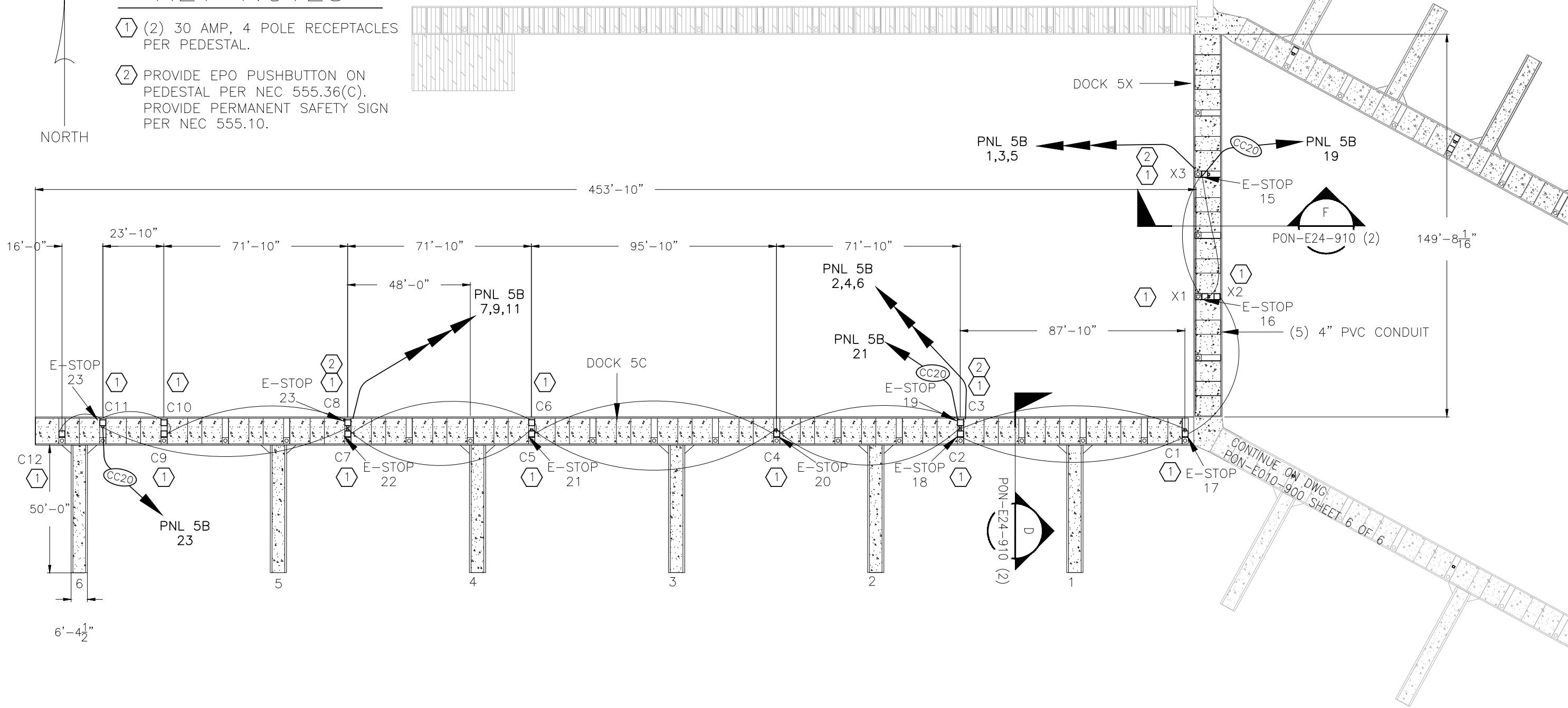
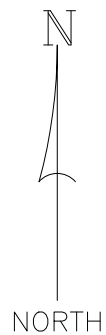


KEY NOTES

- ① (2) 30 AMP, 4 POLE RECEPTACLES PER PEDESTAL.
- ② PROVIDE EPO PUSHBUTTON ON PEDESTAL PER NEC 555.36(C). PROVIDE PERMANENT SAFETY SIGN PER NEC 555.10.



THIS DOCUMENT IS THE PROPERTY OF ALLIANCE CONSULTING ENGINEERS LLC. IT IS FOR USE BY ALLIANCE CONSULTING ENGINEERS LLC IN THE CONSTRUCTION OF THIS PROJECT. NO OTHER USE IS PERMITTED WITHOUT THE EXPLICIT WRITTEN PERMISSION OF ALLIANCE CONSULTING ENGINEERS LLC. COPYRIGHT © 2025, ALLIANCE CONSULTING ENGINEERS LLC.

NO.	DATE	REVISION DESCRIPTION	DRAWN BY	ENGR BY	CHECKED BY	APVD BY
1						
2						
3						

No.	DATE	REVISION DESCRIPTION	DRAWN BY	ENGR BY	CHECKED BY	APVD BY
A	06/13/25	ISSUE FOR BID	MF	NF	NF	NF

DRAWN BY	MF
ENGR BY	NF
CHECKED BY	NF
APVD BY	

- CONCEPT
- FOR REVIEW
- FOR BID
- FOR MANUFACTURE
- FOR CONSTRUCTION
- FOR RECORD



TITLE PORT OF NEWPORT NEWPORT, OR DOCK 5 & 3 RENOVATION DOCK 5C	
SCALE NO SCALE	DRAWING No. PON-E10-900
SHEET 5	OF REV 6

ELEC. REF. FILE:
PLOT SCALE:

CONTINUE ON DWG.
PON-E010-900 SHEET 6 OF 6