



600 S. E. BAY BOULEVARD NEWPORT, OREGON 97365 (541) 265-7758 FAX (541) 265-4235 www.portofnewport.com

For Immediate Release

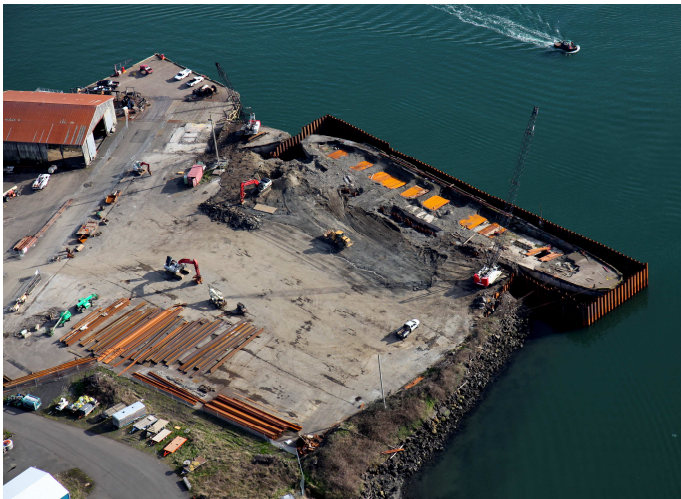
February 23, 2011

Contact:

Don Mann, Port of Newport
541-265-7758

Port Commission Briefed on Construction Updates for the International Terminal Renovation and NOAA MOC-P Homeport Projects

NEWPORT – The Port of Newport board of commissioners was briefed on the progress of the International Terminal Renovation project at its monthly meeting Tuesday, February 22, 2011.



Project manager Frank Berg of DAY CPM Services reported to the Commission that the cofferdam, also known as the containment cell, around the Pasley was completed on February 4, 2011. Monitoring of the Pasley's orientation continues and no further movement has been detected. The deck of the Pasley is being cleared of the existing gravel topping material. Asphalt in the existing parking area

upland, north of the Pasley, is being removed in preparation for the vibroflotation process. The vibroflotation, which solidifies the subterranean soil, will begin next week. The parking lot has been cleared, cleaned and compartmentalized with containment bins where remediation materials removed from the Hennebique and Pasley hulls will be organized, cleaned and sorted. Remediation will begin in late March.

Slides of this month's progress were reviewed showing a view of the overall site, the containment cell completion, containment bins and asphalt removal.

More

Serving the Maritime & The Recreational Communities

Newport International Terminal (541) 265-9651

Newport Marina at South Beach (541) 867-3321

Mark Reusser with Andersen Construction Co. and Ray Glur with DAY CPM Services updated the commission on work accomplished over the past month for the NOAA Homeport project. They noted that the project continues to be on time and within budget. The contractor has driven all of the pier piles



for the dock, has installed all the concrete beam spans between the pile caps and is commencing to pour the final exposed concrete topping slab of the pier. Dredging around the NOAA dock has been completed except for a small amount to be finished in the area of the small floating dock. Fender piles along the pier have also been installed.

Work for the Office Building and Warehouse is in the “finishing stage”. Millwork has been installed as well as finish electrical work and final plumbing fixtures and toilet accessories. Mechanical units at the roof mezzanine are being finalized. The emergency generator has been successfully load tested and permanent power is now on line to the office building. Slides were shown depicting an aerial view of the project, the beginning of exterior landscaping, and the level of interior finish work completed to date for the administration building.

Monday, May 2nd, 2011, is the scheduled move-in date for the tenant, NOAA.

In anticipation of increased public interest, project information is updated on the Port’s web site (www.portofnewport.com) which now includes a Frequently Asked Questions page as well as an online comment form.

For more information about the projects, contact General Manager Don Mann at the Port of Newport, 541-265-7758, or visit the Port’s Web site at www.portofnewport.com. Comments can be submitted at anytime by emailing terminalproject@portofnewport.com.

End