

PORT OF NEWPORT COMMISSION WORK SESSION

Tuesday, May 17, 2022, 6:00 p.m.
South Beach Activity Room
2120 SE Marine Science Dr.
Newport, OR 97365

This will be an in-person meeting, which means you can attend, or you can view the live stream of this meeting on our website: <https://www.portofnewport.com/2022-05-17-commission-meetings-2022-may-17-2022-6-00-p-m>

Anyone interested in making public comment must complete the form on our website and submit it by 11:00 a.m. on Monday, May 16, 2022: <https://www.portofnewport.com/2022-05-17-commission-meetings-2022-may-17-2022-6-00-p-m>

I. Call to Order

II. Public Comment.....Page 2

II. New Business

A. Discussion on offshore wind energy -- *Miranda*.....Page 7

III. Adjournment


From: noreply@getstreamline.com
To: [Gloria Tucker](#); [Paula Miranda](#)
Subject: New form submission received: Commission Meetings 2022 May 17 2022 - 6:00 p.m.
Date: Monday, May 16, 2022 11:59:38 AM



Commission Meetings 2022 May 17 2022 - 6:00 p.m.

| | |
|------------------------|--|
| Date: | May 16, 2022 |
| Name: | Yelena Nowak |
| Email: | |
| Agenda Item: | Discussion on offshore wind energy |
| Public Comment: | <p>My name is Yelena Nowak, I am submitting this comment on behalf of the Oregon Trawl Commission (OTC) about the importance of prioritizing existing ocean users and stakeholders over offshore wind developers as Oregon is investigating a possibility of implementing 3 Gigawatts of offshore wind energy. OTC is an industry-funded state government agency, established by the Oregon State Legislature to support the Oregon trawl industry which includes fishermen participating in the midwater trawl, bottom trawl and pink shrimp trawl fisheries in Oregon. We support recommendations submitted by the Port of Newport's Commercial Fishing User's Group Committee in their April 19th letter, recommending the Port of Newport prioritizes the existing ocean users over offshore wind developers. OTC is deeply concerned with numerous impacts from offshore wind development to our industry and communities. Thank you for your consideration of our comment. Please feel free to reach out with any questions. Sincerely, Yelena Nowak Director, Oregon Trawl Commission</p> |

[Reply / Manage](#)



Powered by [Streamline](#).

From: noreply@getstreamline.com
To: [Gloria Tucker](#); [Paula Miranda](#)
Subject: New form submission received: Commission Meetings 2022 May 17 2022 - 6:00 p.m.
Date: Monday, May 16, 2022 8:07:54 AM



Commission Meetings 2022 May 17 2022 - 6:00 p.m.

| | |
|------------------------|---|
| Date: | 5/16/22 |
| Name: | Mike Retherford |
| Email: | |
| Agenda Item: | 2 |
| Public Comment: | As owner of four fishing vessels out of Newport Oregon , I support the CFUG's letter Offshore wind development will devastating to local fishermen ,communities, and there families |

[Reply / Manage](#)

Powered by [Streamline](#).

From: noreply@getstreamline.com
To: [Gloria Tucker](#); [Paula Miranda](#)
Subject: New form submission received: Commission Meetings 2022 May 17 2022 - 6:00 p.m.
Date: Monday, May 16, 2022 11:30:29 AM



Commission Meetings 2022 May 17 2022 - 6:00 p.m.

| | |
|------------------------|--|
| Date: | May 16, 2022 |
| Name: | Lori Steele |
| Email: | |
| Agenda Item: | II.A. Discussion on Offshore Wind Energy |
| Public Comment: | <p>The West Coast Seafood Processors Association (WCSPA) represents shoreside seafood processing companies located throughout California, Oregon, and Washington, including Pacific Seafood and Bornstein Seafoods in the Port of Newport. We strongly support the unanimous request from the Port's Commercial Fishing User's Committee Group (see April 19, 2022 letter from the CFUG) that the Port of Newport pass a resolution prioritizing existing ocean users and stakeholders during the unfolding process of offshore wind development. We urge the Port of Newport to pass this resolution.</p> |

[Reply / Manage](#)

Powered by [Streamline](#).

From: noreply@getstreamline.com
To: [Gloria Tucker](#); [Paula Miranda](#)
Subject: New form submission received: Commission Meetings 2022 May 17 2022 - 6:00 p.m.
Date: Monday, May 16, 2022 8:59:16 AM



Commission Meetings 2022 May 17 2022 - 6:00 p.m.

| | |
|------------------------|--|
| Date: | 05/16/22 |
| Name: | Dean Fleck |
| Email: | |
| Agenda Item: | prioritizing current stakeholders in the wind energy development process |
| Public Comment: | I support the Port of Newport making a resolution prioritizing current users in the wind energy development process. |

[Reply / Manage](#)

Powered by [Streamline](#).

Jim Burke, President
Board of Commissioners
Port of Newport
600 SE Bay Blvd
Newport, OR 97365

April 19, 2022

The Port of Newport's Commercial Fishing User's Group Committee recommends that the Port of Newport Board of Commissioners consider taking a position to prioritize existing ocean users and stakeholders over offshore wind developers as the Oregon process to install 3 GW of offshore wind energy unfolds.

While offshore wind energy development may help mitigate some of the impacts from climate change, the siting of offshore wind installations is of critical importance and current ocean users and stakeholders must have an authentic seat at the table. The Bureau of Ocean Energy Management (BOEM) accepts negative impacts to current users as part of the trade-off to secure offshore renewable energy. The decision document for the Vineyard Wind project is a prime example of BOEM's acceptance of significant negative impacts to fishermen- it is clearly articulated in the document, but the project was still approved.

The current Oregon call areas – 2,100 square miles of ocean off Southern Oregon, contain fishing grounds for a variety of species. Millions of pounds of fish have been harvested out of that area and subsequently delivered into Newport supporting thousands of jobs. It is critical to retain access to the most productive fishing grounds off our state – anything less will result in a cascade of negative impacts to harvesters, processors, suppliers, ports, and coastal communities. We also have concerns around the uncertainty of impacts to our natural resources, not just to our livelihoods.

This is different than the offshore wave test site, where that area was identified through a collaborative process and where the area footprint is small compared with areas for offshore wind installations. We are not asking the Port of Newport to limit your activities related to staging equipment for the PacWave installation.

The Port of Port Orford passed a resolution asking for offshore wind to be placed outside of certain areas to protect their local fishermen. It seems something to protect fishermen hailing from the Port of Newport or delivering fish into Newport is appropriate now.

Thank you for your consideration.

Signed by all active members of the Port of Newport's Commercial Fishing User's Group Committee: Heather Mann, Ted Gibson, Gary Ripka, Cari Brandberg, Bob Eder, Jim Seavers, Clint Funderburg, Gene Law, Mike Pettis, Mark Newell, and Bob Aue

From: [Paula Miranda](#)
To: [Gloria Tucker](#)
Subject: FW: Work Session on offshore wind
Date: Monday, May 16, 2022 4:31:42 PM
Attachments: [image001.png](#)
[image002.png](#)
[image003.png](#)

From: Conway, Flaxen D L
Sent: Friday, May 13, 2022 5:00 PM
To: Paula Miranda <pmiranda@portofnewport.com>
Subject: Re: Work Session on offshore wind

I'm not sure if you have time, but earlier this week I gave a Science Pub talk about OSW from 6 to 7:30 p.m. It was broadcasted on YouTube Live. The recording is on [YouTube](#) at <https://www.youtube.com/watch?v=PQS3iHNn8Qo>. There were 325 people who registered, and about 150 attended; mostly urban folks in the valley (Portland, Salem, Corvallis, Eugene) and central Oregon. It was webinar format so it was hard to know what folks thought, but I've received good feedback. If you can, watch it and used whatever you like or ask whatever questions you have.

Best,
Flaxen

Flaxen D L Conway

Director, Marine Resource Management Graduate Program
Professor / Extension Specialist, Oregon State University / Oregon Sea Grant
318 Strand Hall, Corvallis, OR 97331-5503
541-737-1339; 541-543-4854 (cell)

“I always wanted to be somebody but I should have been more specific.”
Lily Tomlin

Do you know about the indigenous people of the land you are on right now? If not, check out <https://native-land.ca/>. Corvallis Oregon stands on the traditional homelands of the Mary's River or Ampinefu Band of Kalapuya, whose ancestors have resided here since Time Immemorial. Following the Willamette Valley Treaty of 1855, the Kalapuya people were forcibly removed to reservations in Western Oregon. Today, descendants of these people are alive and strong as part of the [Confederated Tribes of Grand Ronde Community of Oregon](#) and the [Confederated Tribes of the Siletz Indians](#).

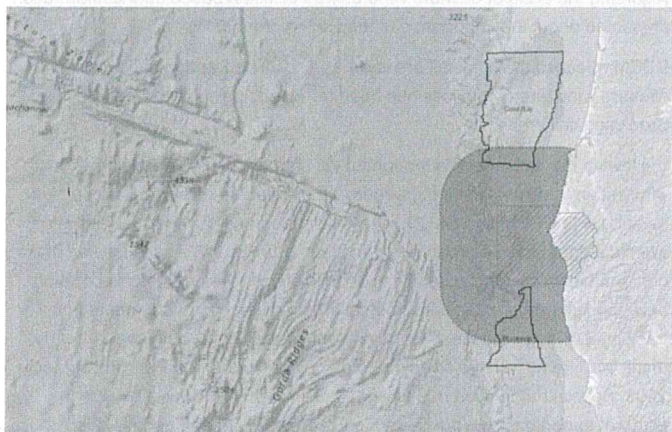
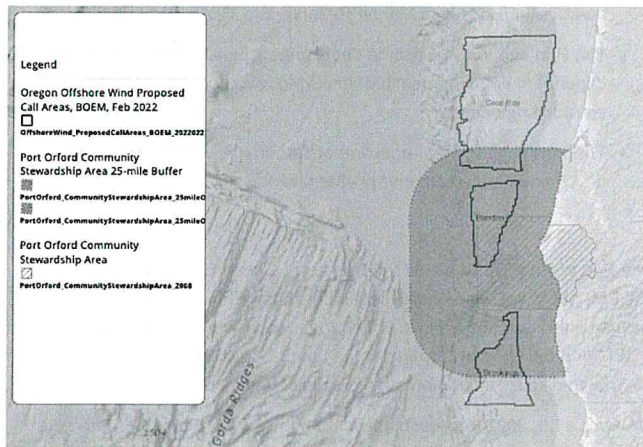
From: Paula Miranda <pmiranda@portofnewport.com>
Date: Friday, May 13, 2022 at 4:55 PM
To: Conway, Flaxen D L [BRABY Caren E * ODFW](#)

[https://mailchi.mp/portofportorford.org/initial-budget-meeting-for-the-port-of-port-orford-2022-11516949?e=\[UNIQID\]](https://mailchi.mp/portofportorford.org/initial-budget-meeting-for-the-port-of-port-orford-2022-11516949?e=[UNIQID])



Port of Port Orford

BOEM removes Bandon call area from offshore wind siting map after meeting with Port of Port Orford



Conservation, and Development to discuss siting of offshore wind energy facilities on the South coast - the result? Port Orford fishing grounds are "off the map" for offshore wind energy development.

On February 16th, 2022 the Port of Port Orford passed Resolution 2022-01, regarding the siting of proposed offshore wind energy facilities along the southern Oregon coast. This resolution, available on the Port's website at portofportorford.org, outlines the Port of Port Orford's support for sustaining the living marine resources that are the lifeblood of the Port, and the commercial fishing industry, which employs 30% of the local workforce.

In its resolution, the Port commits to marine stewardship, research, clean energy, and a thriving commercial fishing industry:

- The economic activity of the Port comprises 30% of the workforce of Port Orford.
- The majority of this economic activity is driven by commercial seafood harvest and processing.
- Commercial seafood harvest depends on the health of the ecosystem of the commercial fishing grounds, and access to these resources.
- The Port Orford Community Stewardship Area is biologically diverse and encompasses 935 square miles of ocean habitat, including the fishing grounds of Port Orford. Commercial fishing activities that take place there have a substantial positive effect on the economy and natural resource base of Port Orford.
- The Port of Port Orford and commercial fishing fleet is engaged in marine stewardship through collaborative ocean research and support for the nearby Redfish Rocks Marine Reserve and Marine Protected Area.
- The Port supports workforce development initiatives for jobs that are dependent upon the health of the living resources found in the surrounding oceans.
- The Port supports the reduction of carbon emissions through the development of clean energy alternatives.

The Port of Port Orford asked the Bureau of Ocean Energy Management (BOEM) not to sell wind energy lease holdings within the Port Orford Stewardship Area and 25 mile buffer zone, and requested a meeting with BOEM and the Oregon Department of Land, Conservation, and Development (DLCD) to discuss implementation details of this resolution.

On April, 11th, 2022 representatives from the Port of Port Orford and the commercial fishing fleet met with representatives from BOEM and the DLCD to discuss the siting of offshore wind energy devices. Port representatives presented data on fishing grounds within the draft BOEM call areas. BOEM, DLCD, and the Port reached an understanding about the Port's concerns regarding the siting of offshore wind energy devices, based on the information presented about the importance of the fishing grounds.

BOEM released the final call areas on April 29. The Bandon call area for offshore wind energy devices has been removed, leaving the Coos Bay and Brookings call areas.

"Following the passage of a thoughtful yet stern resolution opposing offshore wind within traditional fishing grounds, we enjoyed an extremely productive meeting with BOEM and DLCD, where we presented our case for exclusion. We did it right, using a proactive, confident approach. We saved a way of life, our community's identity, and its economic driver. Without the collaboration between fishermen and environmental organizations that documented our traditional fishing grounds, this may have had a different outcome. A hearty, "thank you", to all with the foresight to participate in the 100 Penny program in 2003. Special recognition due to Andy Lanier with DLCD for providing the platform to demonstrate our dependence on these areas, and his deep understanding of our struggle. Great work, thanks Andy!"

"It's important for the Port District citizens to understand the significance of what our Port Commissions actions have done to protect our traditional fishing grounds and way of life."

- Port Manager, Pat Cox

"We appreciate the opportunity to present our message more accurately using the data tools provided by the DLCD. This allowed us to engage effectively to accomplish our goal to protect our fishing grounds."

- Aaron Ashdown, Port Commissioner and Commercial Fisherman

[Find Out More](#)

[View this email in your browser](#)



Port of Port Orford

Copyright © 2022 Port of Port Orford, All rights reserved.

Want to change how you receive these emails?
You can [update your preferences](#) or [unsubscribe from this list](#).