



OREGON COAST
AQUARIUM

Proposed Improvements





Mill Pond

Estuary

Main Entry Rd

Entry Path

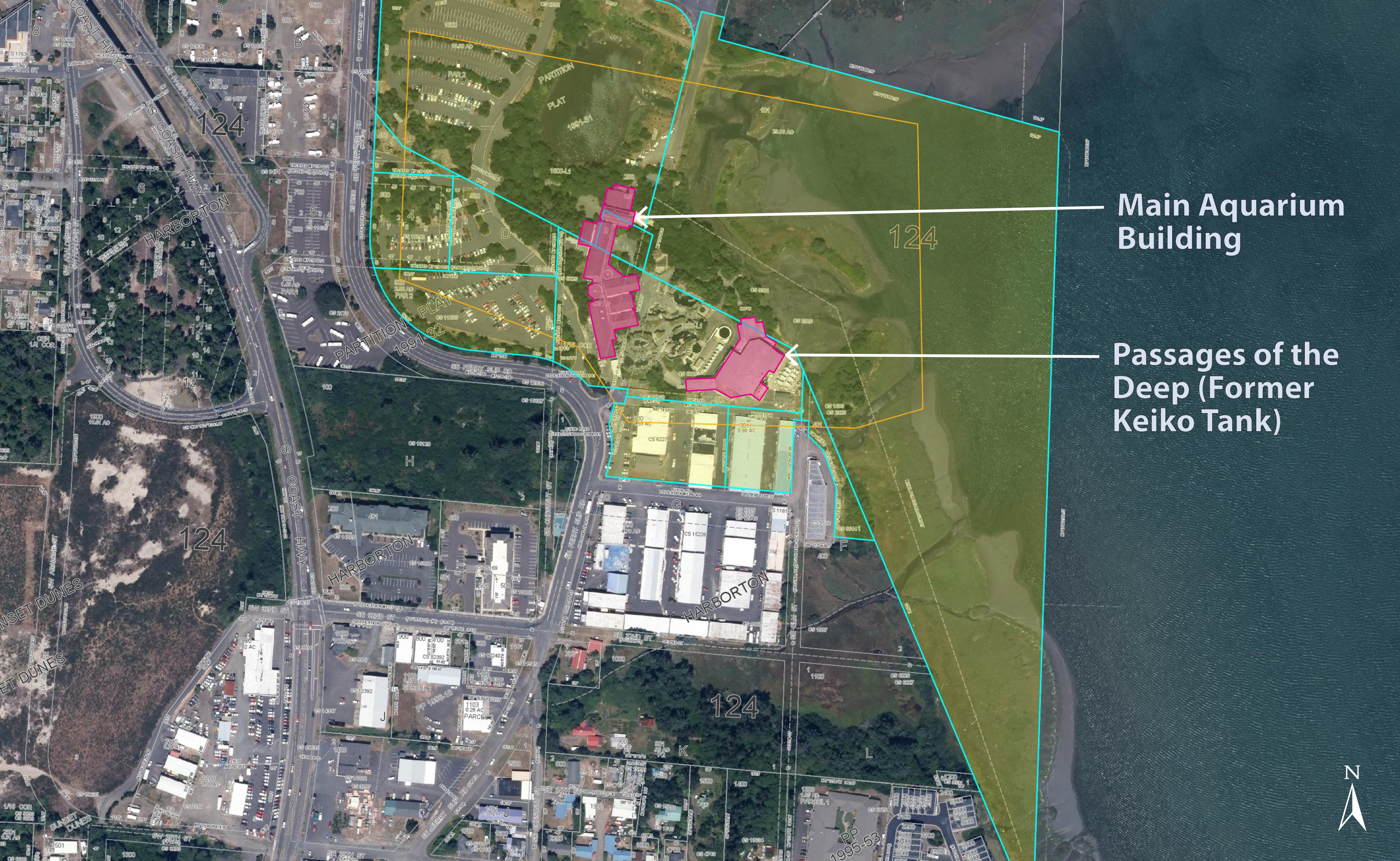
**Main
Aquarium
Building**

**Aquarium
Parking**

SE Ferry Slip Rd

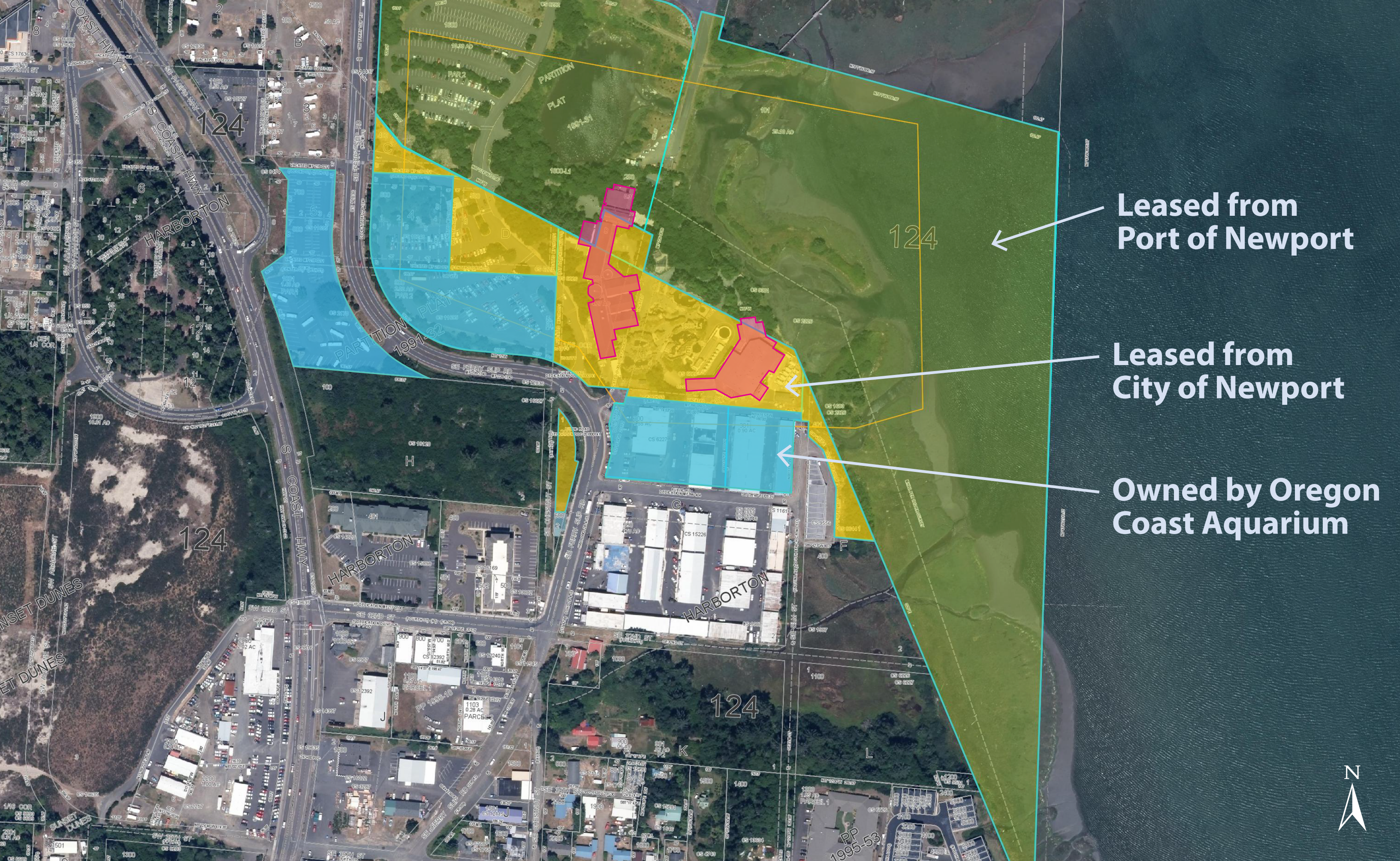
**Passages of
the Deep
Exhibit**





Main Aquarium Building

Passages of the Deep (Former Keiko Tank)



Leased from
Port of Newport

Leased from
City of Newport

Owned by Oregon
Coast Aquarium

Crosswalks & Drop-Off

925 sf Ticketing Addition

New Play Area

New Entry Signs

Lobby & Cafe Remodel

New Amphitheater

950 sf Gallery Expansion

Remodeled Galleries

SE Ferry Slip Rd

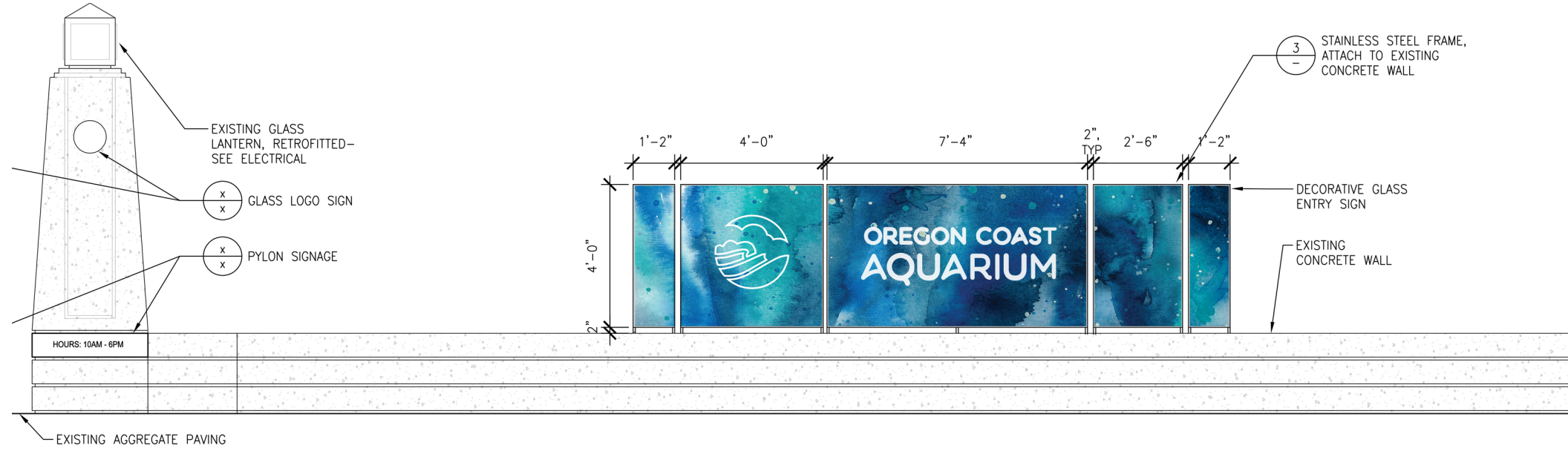
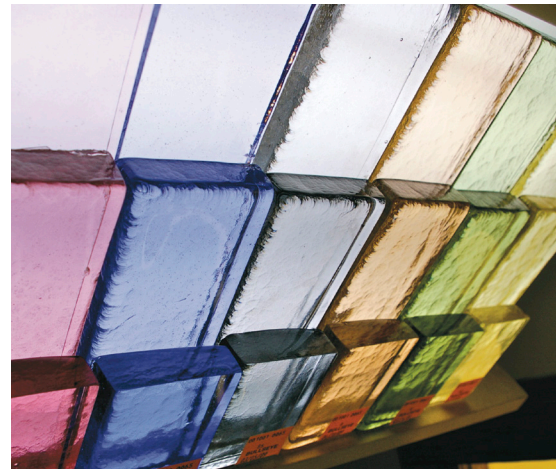
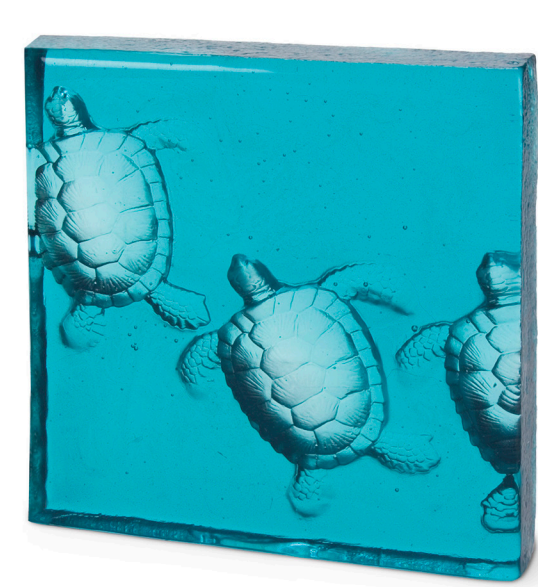


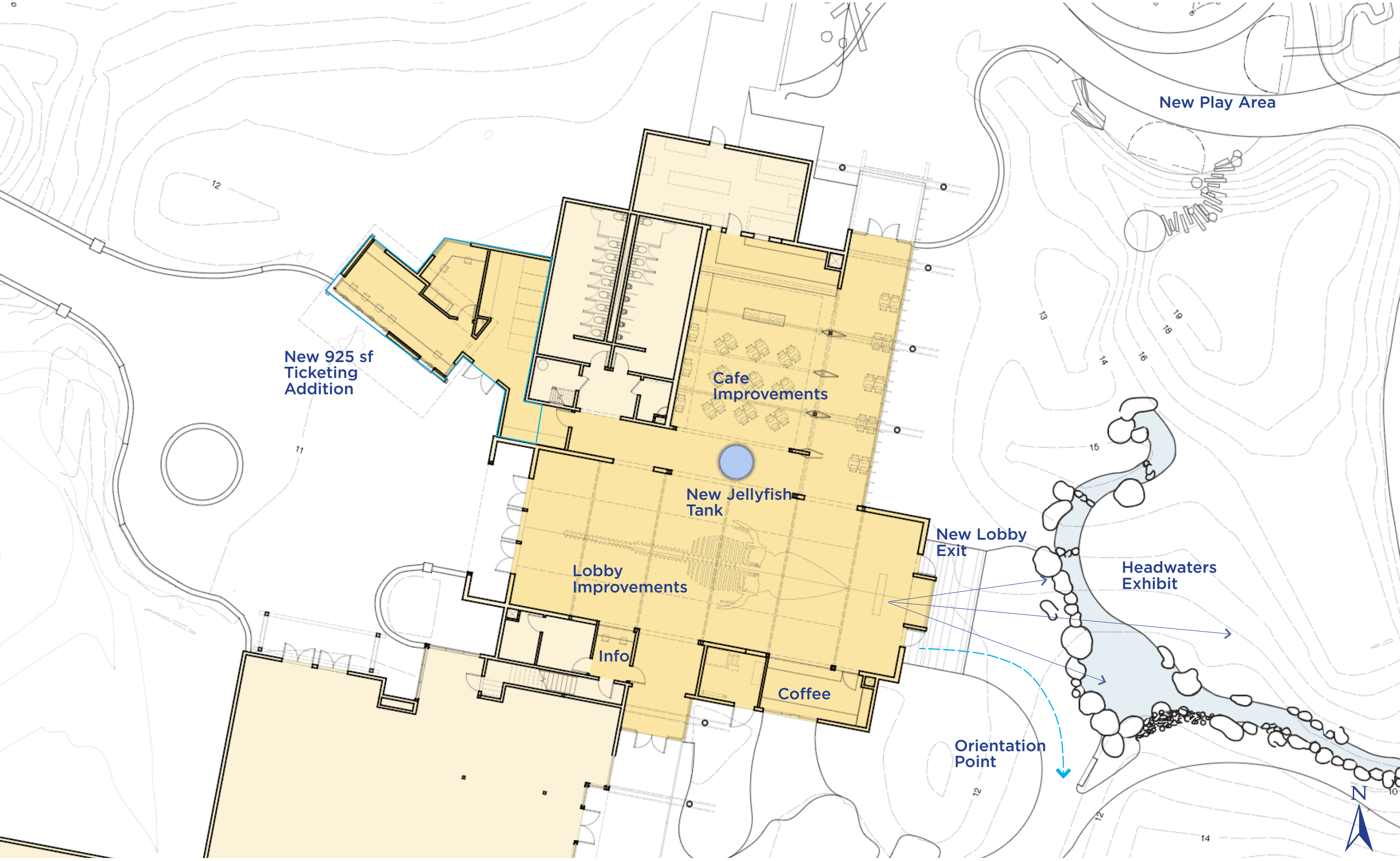


Phase One 2020

Phase Two 2021







New Play Area

New 925 sf
Ticketing
Addition

Cafe
Improvements

New Jellyfish
Tank

Lobby
Improvements

Info

Coffee

New Lobby
Exit

Headwaters
Exhibit

Orientation
Point







Black sea nettle
Ortiga de mar negra
Chrysaora achilles

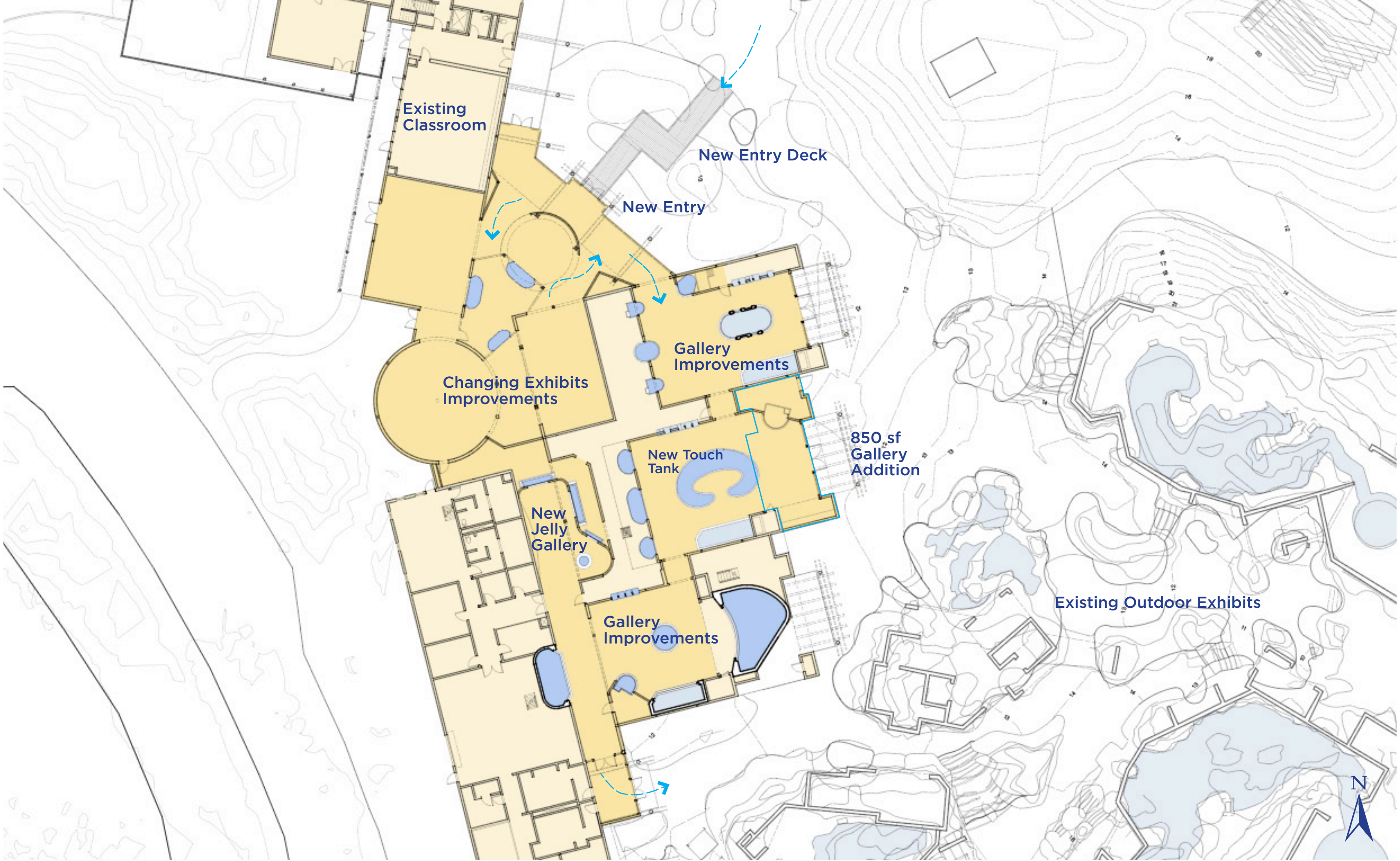
This jelly dwells in offshore currents in waters off the West Coast. A black sea nettle drifts on the currents. Look for its trailing purple, bell which can grow to more than three feet across. And see those delicate tentacles in the bell; they can trail to more than 25 feet.





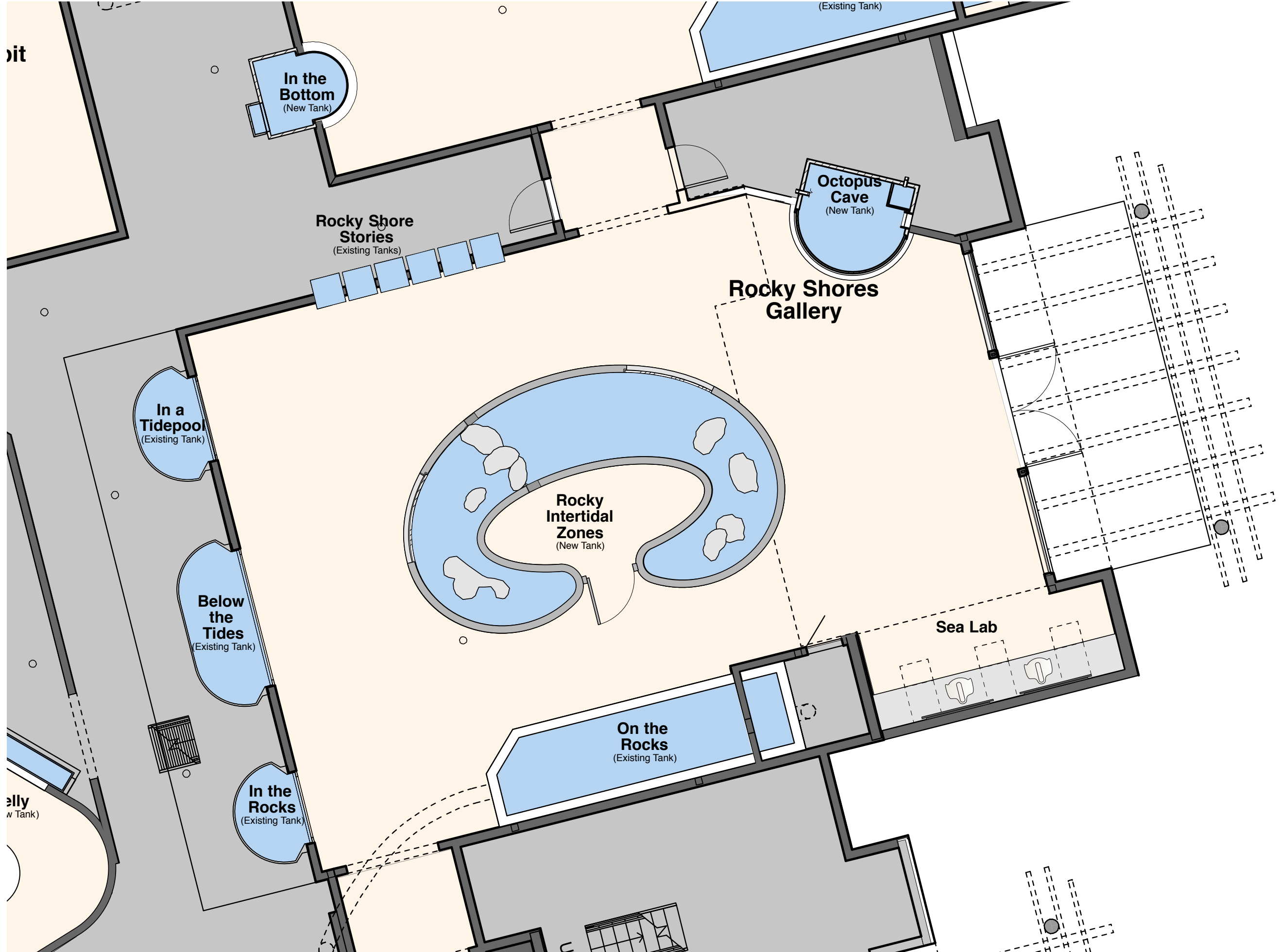




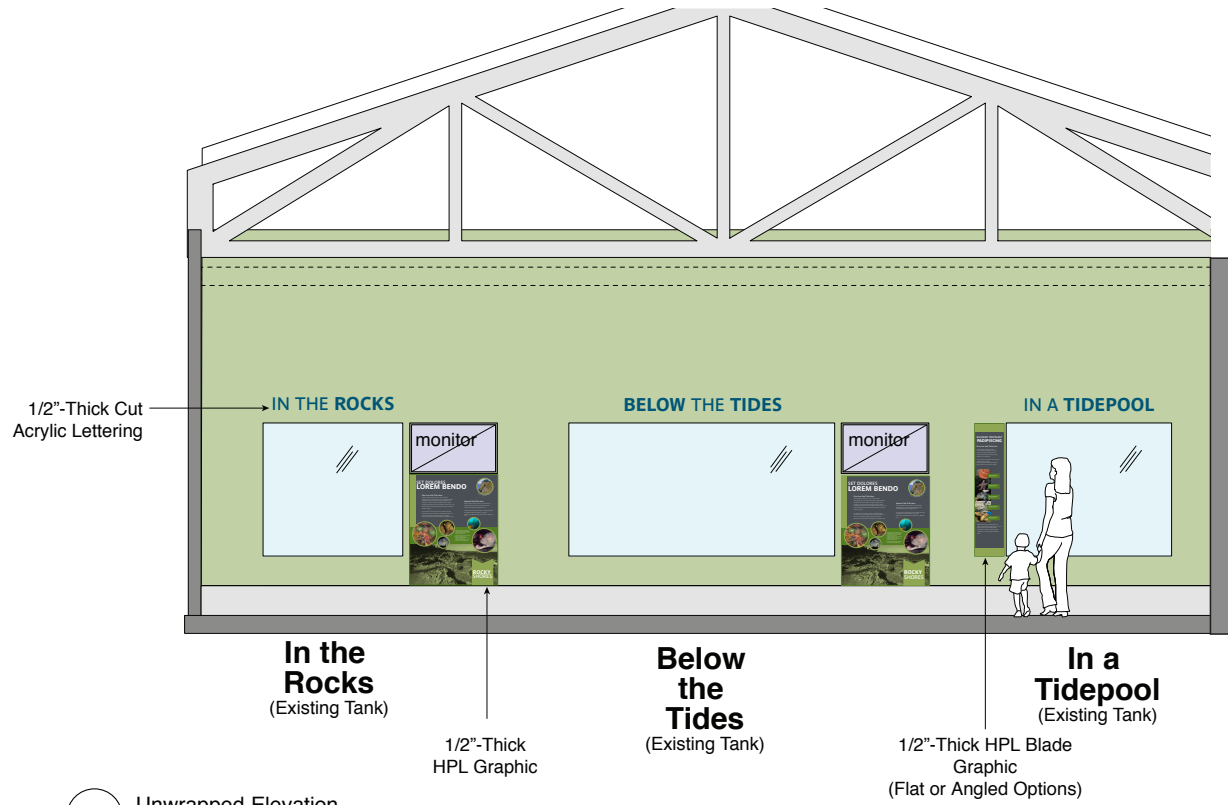


Phase Two Projects - Gallery Improvements

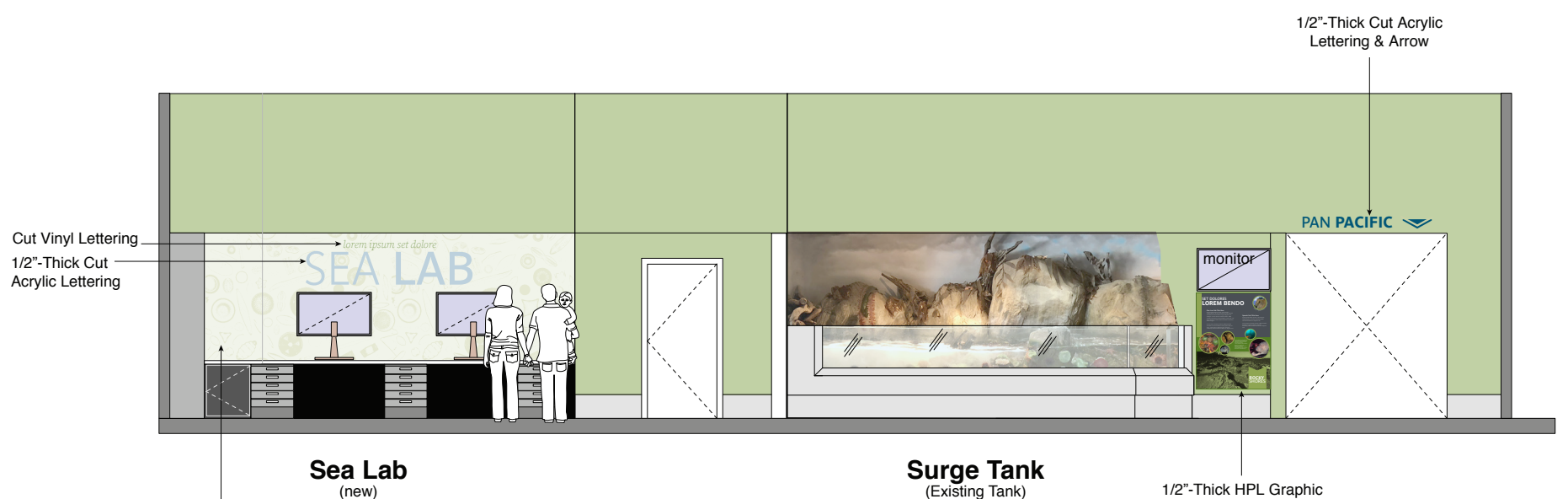
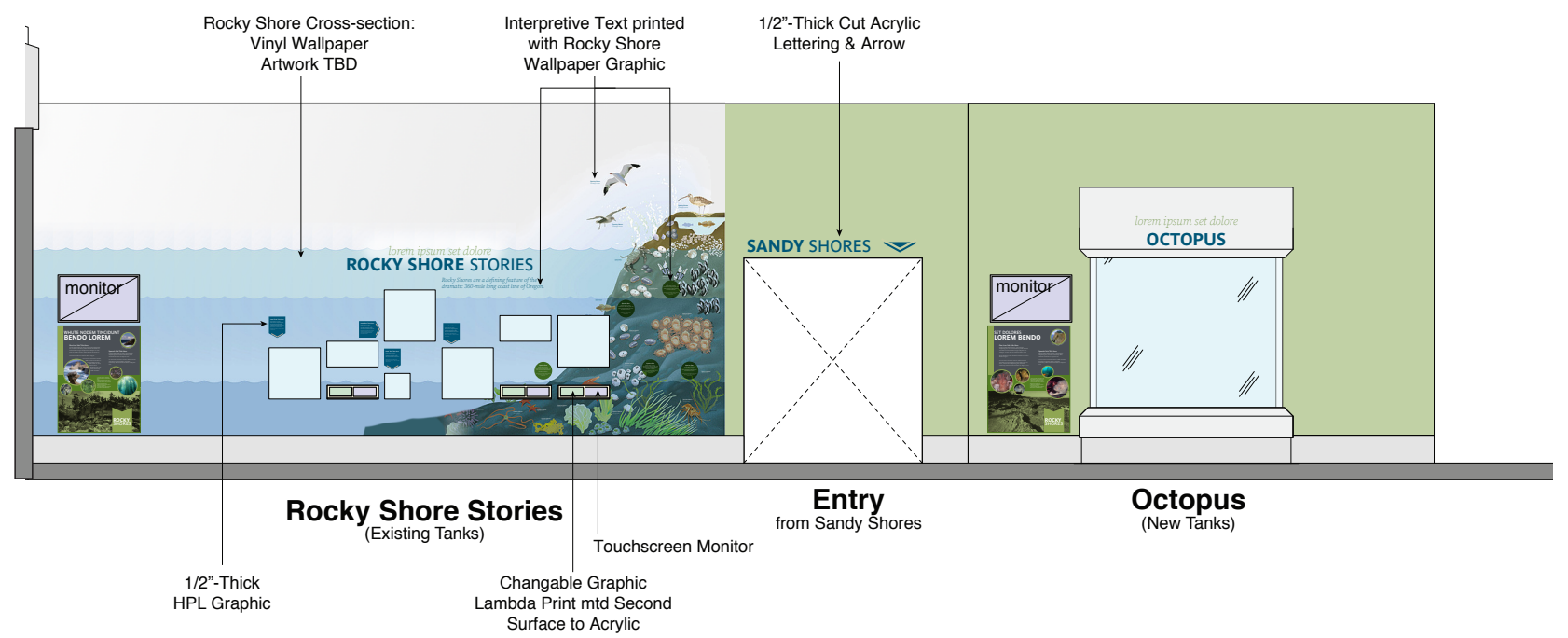
Proposed Improvements

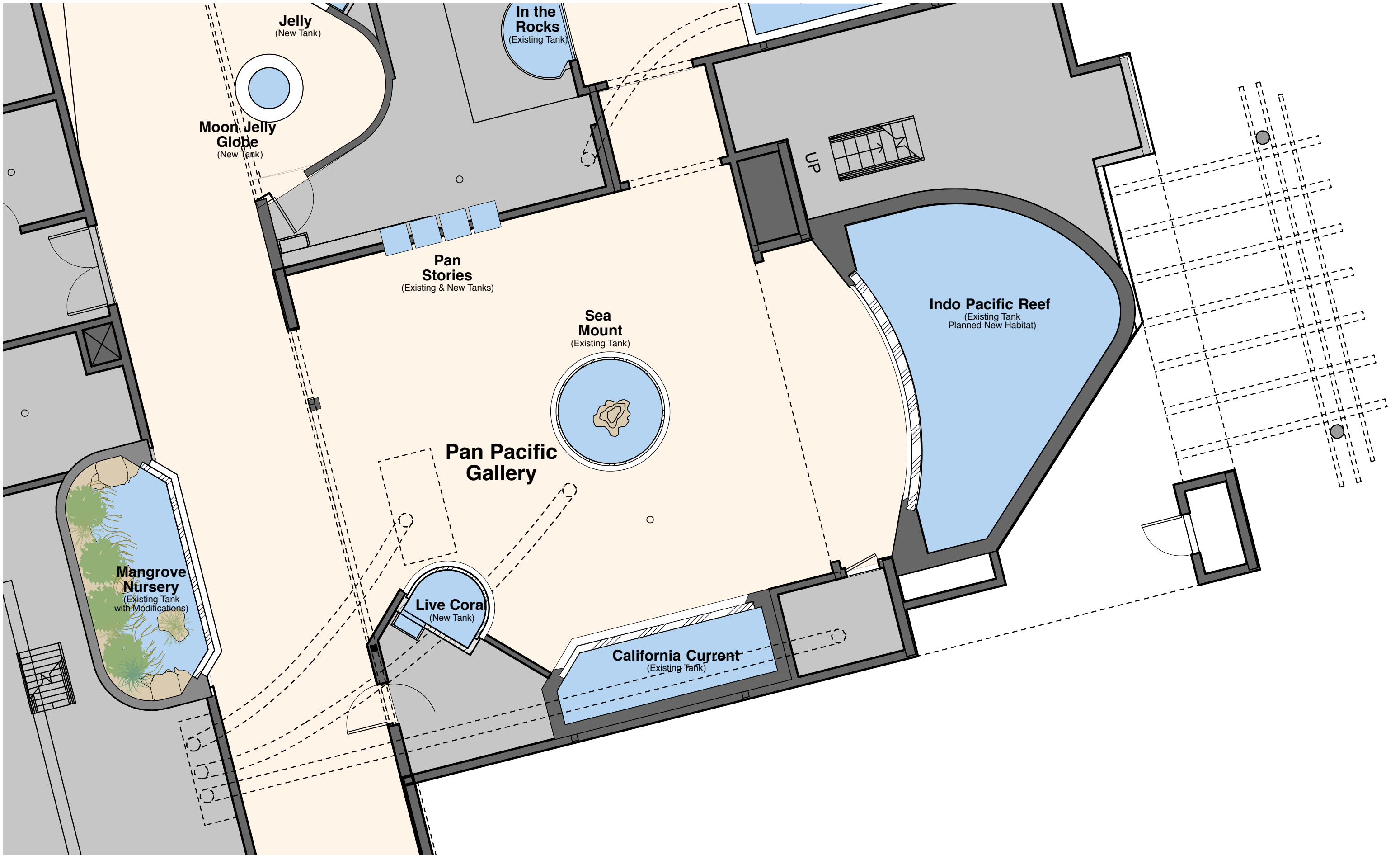






1 Unwrapped Elevation
Scale: 1/4" = 1'-0"





Biodiversity

250,000 species live in coral reefs producing more than 4,000 different species of fish and 800 species of reef invertebrates.

Scientists estimate there may be up to 6 million undiscovered species living in and around coral reefs.

CORAL REEFS: Living wonders of the natural world

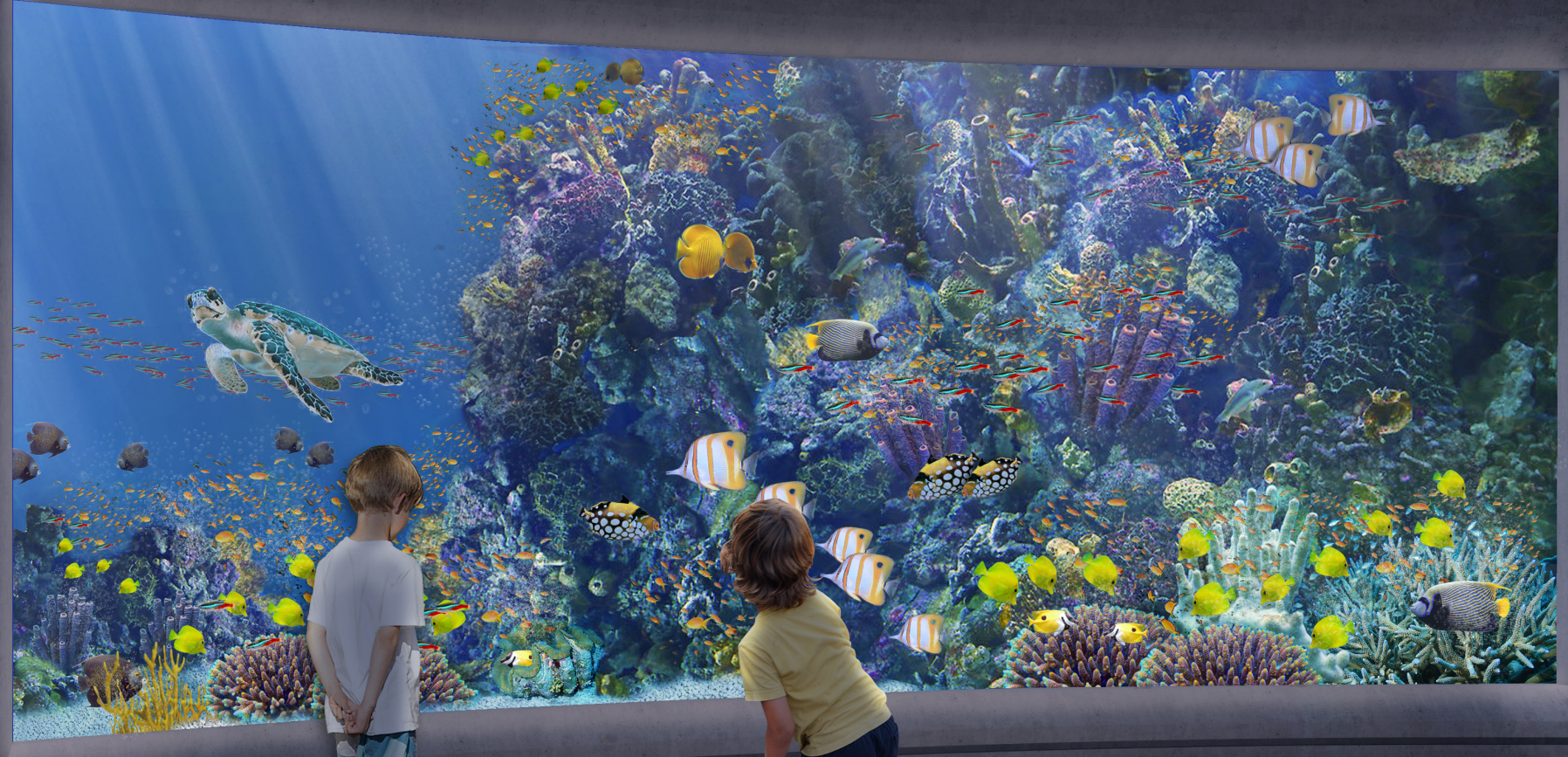
Coral reefs are one of the most productive and diverse ecosystems on Earth. They may only cover a tiny fraction of the world's oceans, but coral reefs are home to a quarter of all marine life, providing environmental and economic services to millions of people around the globe. But by how long? According to a study published in the journal Nature, about 70% of the world's coral reefs are at risk of being lost by 2030 due to a combination of human activities and global warming.

The Pacific Rim Reef

Trouble for the Reef

Despite their rocky appearance, corals are fragile, living animals. Pollution, overfishing, rising water temperatures, and unsustainable tourism activities are all major threats to coral reefs and their habitats. These combined factors have led to the destruction of significant portions of the world's coral population.

With coral reefs dying at a rapid pace, the Texas State Aquarium and SDOORF (Sexual Coral Reproduction) are dedicated to saving and restoring these critically important habitats by breeding, cultivating, and planting corals back into the ocean.



The Coral Triangle

Ocean Currents

Despite their rocky appearance, corals are fragile, living animals. Pollution, overfishing, rising water temperatures, and unsustainable tourism activities are all major threats to coral reefs and their habitats. These combined factors have led to the destruction of significant portions of the world's coral population.

Underwater Treasures

The Spanish galleon San Juan was a large sailing ship that was used to transport goods and treasure across the sea. Children were among the crew of 200 people, and later became world-famous treasure hunters and seafarers.





