



# Port of Newport

## Port Dock 7 & Public Fishing Pier Project

Aaron Bretz, Director of Operations

February, 2020



# What will we cover?

- Port of Newport Overview
- Project Purpose
- Project Overview
- Conceptual Design and Features
- Mitigation
- Features of Mitigation
- Timeline
- Questions from the Port
- Questions for me

# Port of Newport Overview

South Beach Marina/RV Park



NOAA MOC-P



# Port of Newport Overview

Commercial Marina

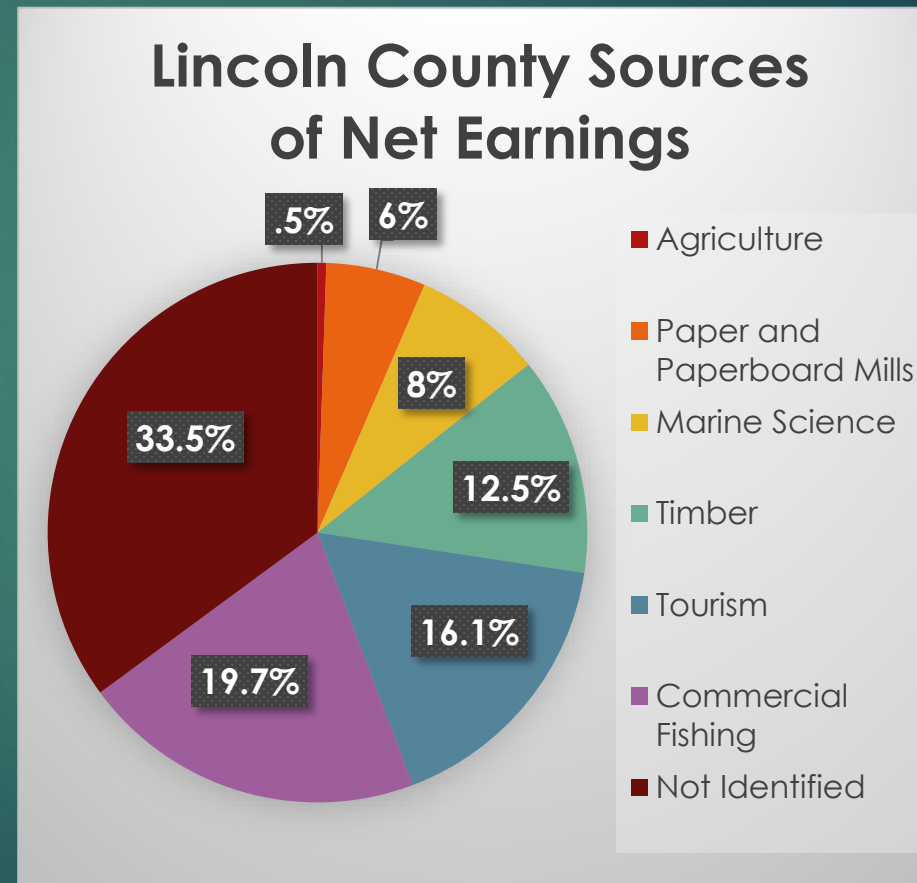


Newport International Terminal



# Project Purpose

- ▶ From most recent statistics published by the Lincoln County Board of Commissioners
- ▶ 300 Annual average commercial fishing jobs, peak of 500 in summer
- ▶ Tourism is a significant economic driver in the county
- ▶ Investments and transfer payments as a source of net earnings not specified



# Project Purpose: Changes in the County's #1 Industry

Number of fishing vessels licensed in Oregon reduced by 20% from 2011 to 2018

Shift in moorage revenue at the Port from vessels <50' to vessels >50'



# Project Purpose: Changes in the County's #1 Industry

F/V PEGASUS at Toledo Boat  
Yard before sponson

F/V PEGASUS at Toledo Boat  
Yard during sponson



# Newport Fishing Vessels at the Toledo Boat Yard





# Project Purpose: Solving Multiple Problems

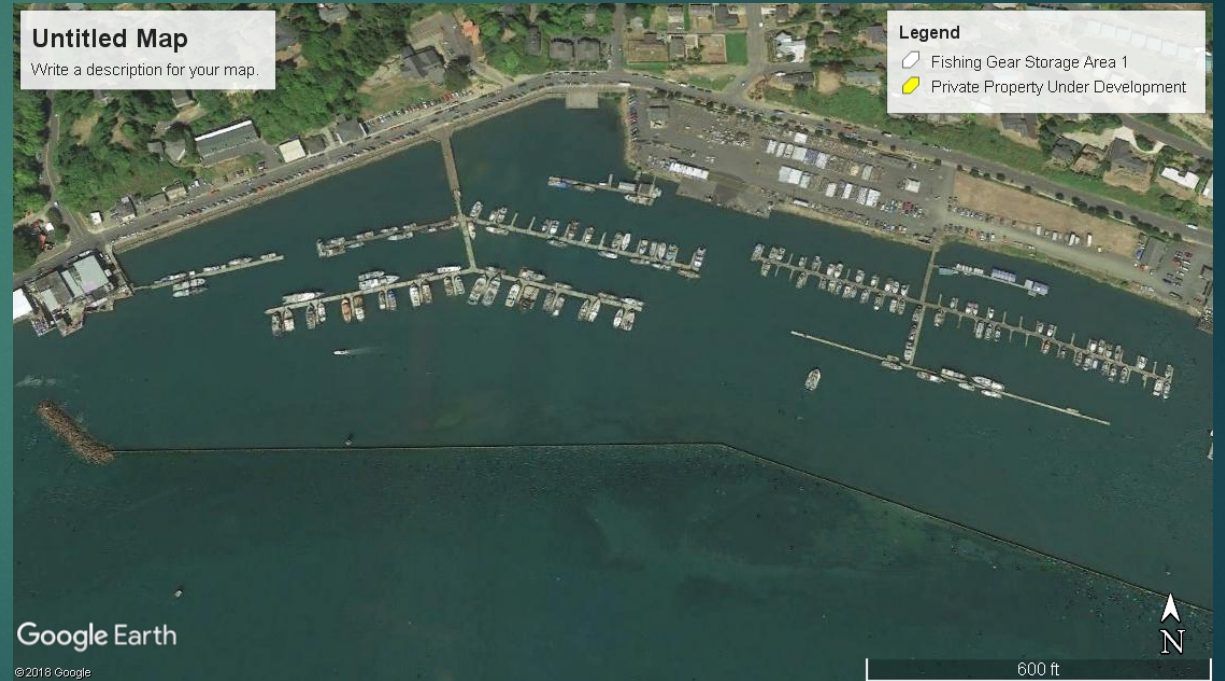


# Project Purpose: Updating Infrastructure Needs

1971



2018



# Project Purpose: Newport's fleet is growing while others are shrinking

- The Commercial Marina is at 117% Capacity (varies but stays over-capacity)
- The Port has turned down licenses for 27 new fishing businesses at since July of 2018
- Growth in Independent Buyers
- Other historical Oregon Fishing Ports
  - Siuslaw (Florence)
  - Winchester Bay
  - Garibaldi



# Project Purpose: Replace failing industrial infrastructure

Port Dock 7F



Port Dock 7X



# Project Purpose: Infrastructure for the Future

Fisheries change, but the resourcefulness, business acumen, and marketing ability of commercial fishers does not

- Commercial Salmon Fishery of the early 1900's
- Sardine Fishery
- Herring Fishery
- Dungeness Crab Fishery
- Hake/Pacific Whiting Fishery
- Rock Fish
- Slime Eels



# Project Purpose: Tourism and Public Access

Public Fishing Pier



Failing Infrastructure



# Project Purpose: Tourism and Public Access

Failing Infrastructure



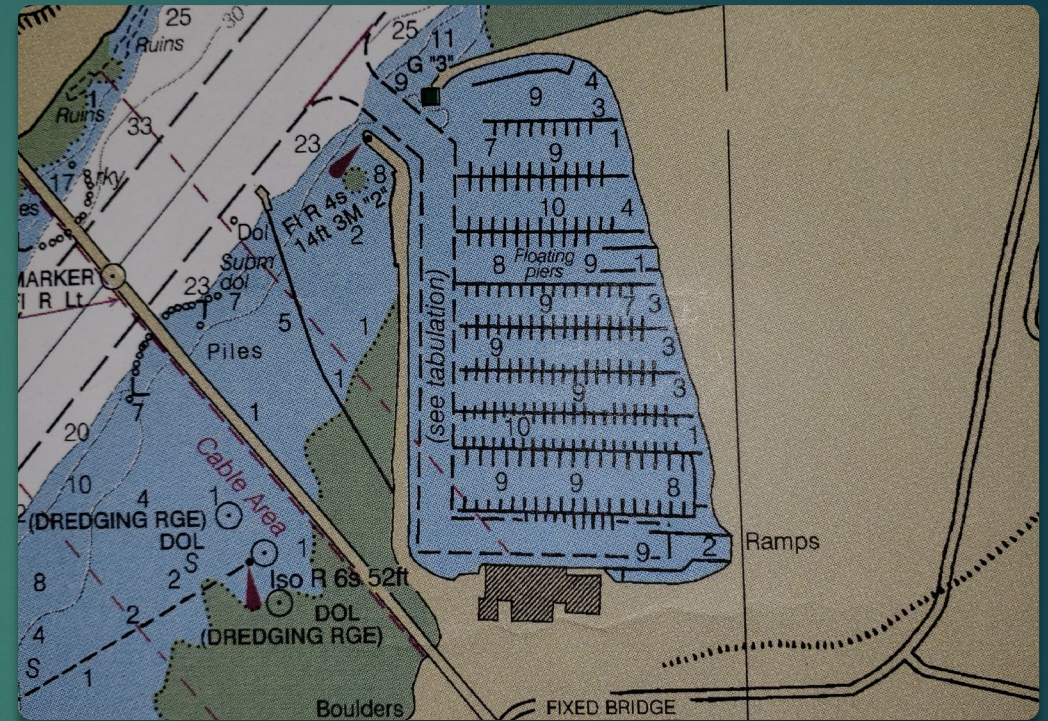
Failing Infrastructure



# Project Purpose: Improve Public Access

## “Public pier crabbing

This popular pier located near the Rogue Brewery can be productive for Dungeness crab in the summer and fall months. At other times of the year, red rock crab can be caught. Crabbers seem to have the best luck towards the end of the pier.” --ODFW, myodfw.com

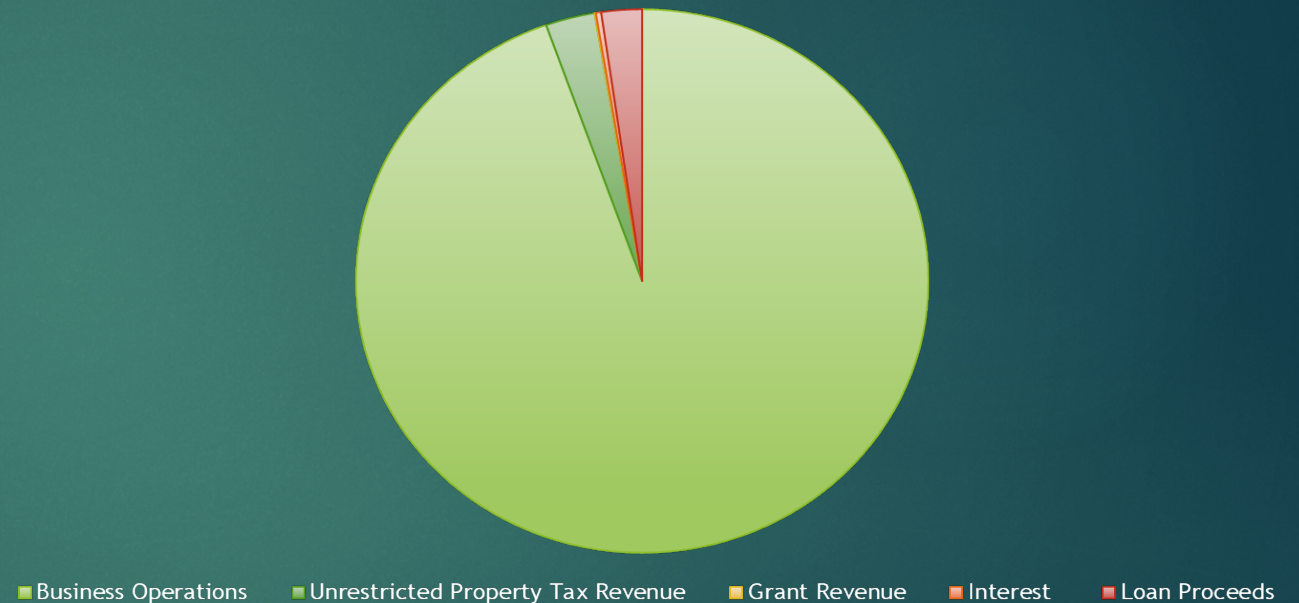




## Why a Combined Project Methodology?

- Ports generally receive very little tax revenue for operating and maintenance
- This reality dictates that we operate frugally
- Mitigation costs money
- The best way for the Port to spend mitigation dollars is if we can spend that money on projects that benefit the Port directly somehow
- Mitigation methods must be spelled out in the permit application

2017-18 General Operating Fund Revenue by Source



# Project Overview

- Army Corps CAP Section 107 Request approved as a new start feasibility study to create a federal channel through marina
- Increase linear moorage at Port Dock 7 from 5,265' to 7,460'
- Dredge berths to accommodate modern fishing vessels
- Reduce over-the-water structure of fishing pier by 55%
- Initiate Section 408 request to Corps for improvements to the South Beach Breakwater, which will link to the new pier
- Improve ADA accessibility and fishable area of the public pier



# Proposed Concept Features

- -20' channel as part of Army Corps CAP Section 107 program dredged and maintained by Corps (new-start feasibility study set to start this year)
- 41% increase in linear moorage space
  - Total 7,460' proposed
  - Total 5,265' currently
- Two 360' side tie docks deep enough for large fishing vessels that cannot currently use this area at all
- 50 amp electrical service
- Bilge pump-out station
- Upland work is necessary (additional restrooms, showers, laundry)



# Conceptual Design & Features

- Side tie space provides immediate relief to current need for moorage of vessels greater than 80' in length
- 60' slips provide assigned moorage for vessels up to 70' in length
- Ample space for the smaller number of vessels less than 50' in length
- Port Dock 5 is not part of



# Proposed Concept Features

- New steel pilings eliminate need for cross bracing, which is a significant snag hazard for crab pots
- New pier runs parallel to current, allowing for crabbing and fishing on both sides of pier during flood or ebb currents
- Pathway will complete the walking circuit around the marina, which is a desirable amenity as expressed by OSMB; creates additional funding source
- Provides waterside access throughout entire marina
- At least one third of the existing pier extends over mudflat; this will be an improvement for public access
- Design to focus on accessibility by diverse users; not only ADA compliant, but incorporate every best practice possible



# Conceptual Design



PORT OF NEWPORT  
PORT OF NEWPORT PUBLIC FISHING PIER | LOOKING SOUTH

January 2020



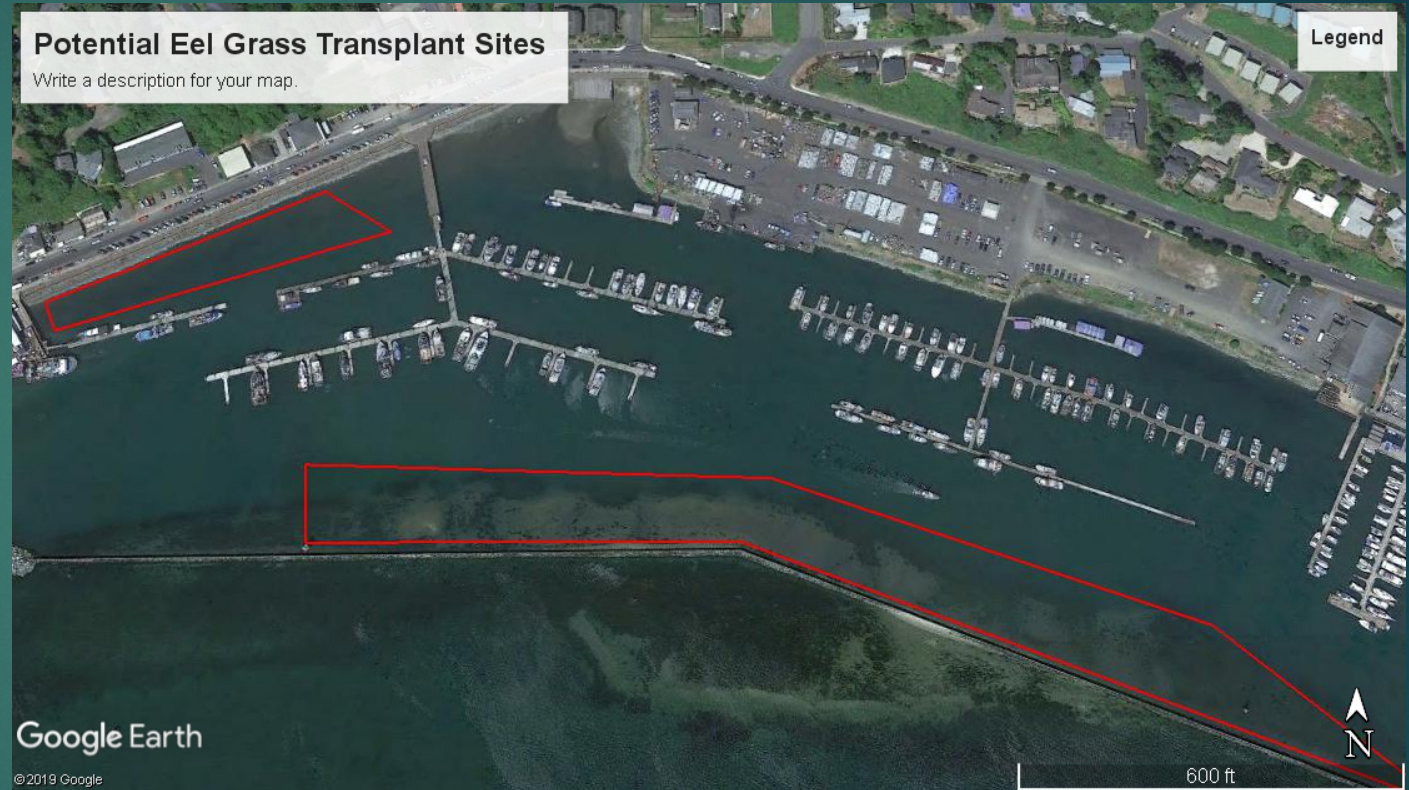
# Features of Mitigation Project

- Removal of creosote pilings from bay, replacement with environmentally friendly steel pilings
- Reduction of about 75 pilings, which could count toward removal/fill credit for PD7 and/or additional pilings for new PD7
- Reduction of over-water structure by about 7,400 square feet (55%)
- Proposed increase of over water structure at Port Dock 7
- If it's determined that the Port wants to add more fishing pier, we can extend the length over the water



# Mitigation Eel Grass

- There is eel grass in the Commercial Marina
- Dredging projects will have to account for eel grass mitigation
- In kind, on site mitigation gets the most credit
- The Port has transplanted eel grass in the past; if we could do something similar in the Commercial Marina, we may be able to get the credit necessary to dredge





# Timeline

## July 2021

- Conceptual Planning
- Alternatives Analysis
- Apply for Planning Funds
- Public Outreach

## July 2022

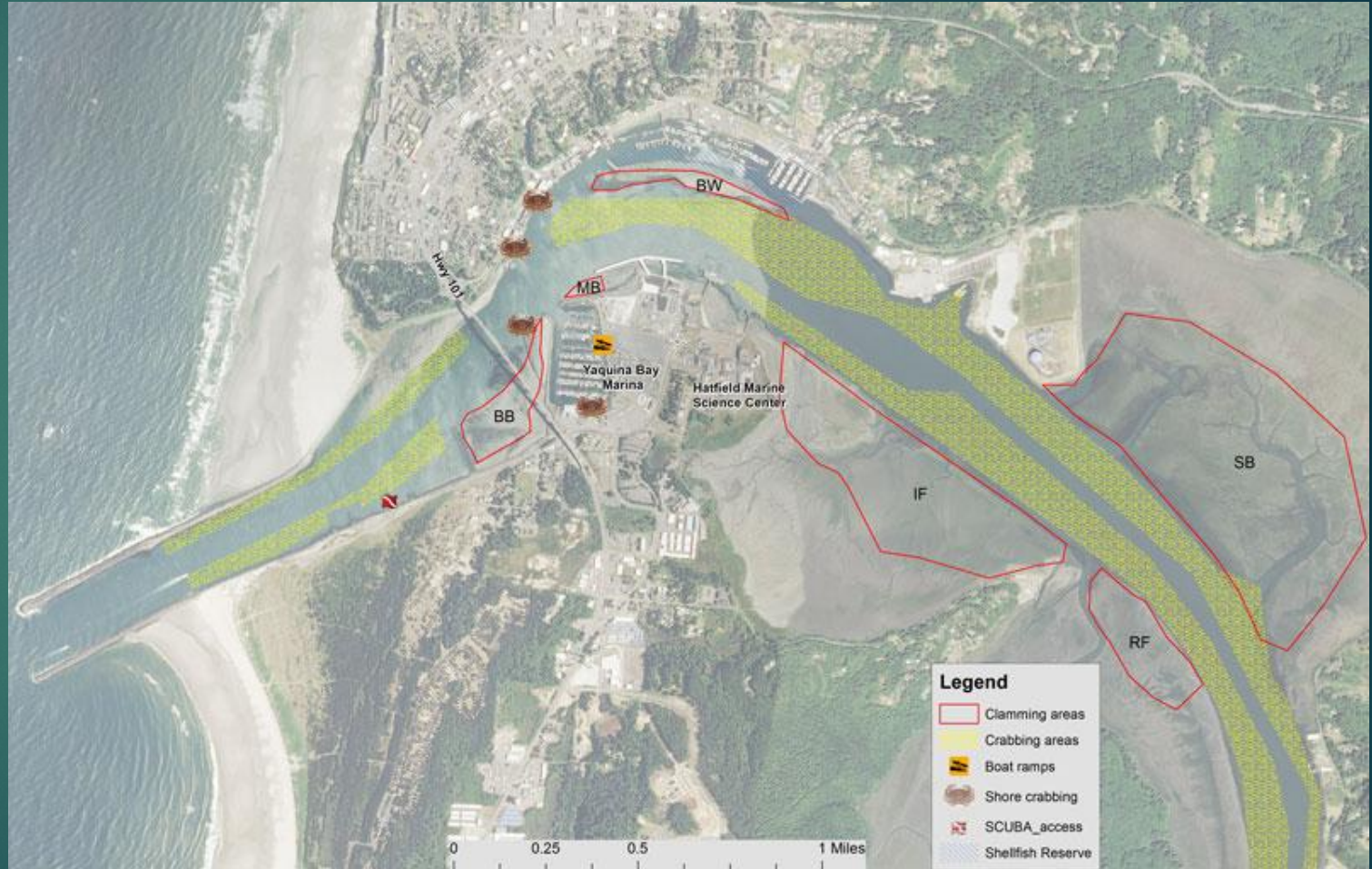
- Engineering Plans for Permitting
- Develop formal planning proposal to increase chances of grants, financing
- Public Outreach

## January 2023

- Begin Formal Consultation for Permitting
  - Biological Assessment (1 year)
  - Coastal Zone Permitting (1 year)
  - Coastal and Harbor Sediment Transport Modelling
  - Final Engineering Plans
  - Construction NOV 2024

# Questions From the Port

- What other public access issues can be foreseen?
- Resources for best practices for diverse users
- Fishing Pier mortality rates of crabs thrown back
- Would the Port be prevented from transplanting eel grass to areas for clamming?
- Are there other areas where eel grass might be able to take hold?
- When considering mitigation for dredging, what parameters are acceptable?
  - Since we would remove, must we fill, or can we simply return man-altered habitat to its natural state?
  - Port owns property up the Bay Road that might be opened back to the bay



Questions?