

**PORT OF NEWPORT SPECIAL MEETING AGENDA**

Tuesday, July 26, 2016, 12:00 noon  
OSU Extension Office  
1211 SE Bay Boulevard, Newport, OR 97365

- I. Call to Order ..... 12:00
- II. Review Rogue Mural Process
- III. Adjournment ..... 12:30

Regular meetings are scheduled for the fourth Tuesday of every month at 6:00 p.m.

The Port Newport South Beach Marina and RV Park Activity Room is accessible to people with disabilities. A request for an interpreter for the hearing impaired or for other accommodations for persons with disabilities should be made at least 48 hours in advance of the meeting to Port of Newport Administration Office at 541-265-7758.

-###-





## WORK SESSION AGENDA ITEM

---

**DATE:** July 26, 2016  
**RE:** Rogue Expansion Mural Selection Process  
**TO:** Board of Commissioners  
**ISSUED BY:** General Manager

---

### **BACKGROUND**

The Port of Newport executed lease agreements with the Oregon Brewing Company within the last two years that included provisions for the installation of murals on the outside walls of the expansion.

Lease signed March 25, 2014 – Serven Building Distillery Expansion. Rogue “agrees to install a mural, with Lessor approval, on the south face of the new addition.” Rogue initially shared a mural design, but the Commission felt the image was too much of an advertisement for Rogue products. Ultimately, it was decided that the Port would design the mural and Rogue would install.

Lease signed March 22, 2016 – Rogue Expansion. The Port and Rogue agreed to “develop and install a mutually agreeable mural(s) or decorative feature(s) on the south facing wall of the newly constructed warehouse building.” In the Work Plan attached to the lease, the Port agreed to incur all costs associated with designing the mural and Rogue agreed to incur all costs associated with installation.

Rogue presented a concept to the Port Commission last year, but the Port felt that the mural served more as an advertisement for Rogue and less as an introductory welcome to South Beach. At that time, the Commission felt that the mural should be reflective of the wide range of activities in South Beach in addition to historical and cultural references to the area.

Rogue asked the Port to present the design and Rogue would paint and install. As such, the Port will incur the costs of developing the mural and then pass the concept along to Rogue

### **SCOPE OF WORK**

*July 26 – Noon Work Session to brainstorm concepts, images to aid the artist in coming up with three concept drawings. Artist will take input and based upon the discussion present three design ideas for the Commission to review. Design will take into consideration Phase II expansion.*

August 23 – Noon Work Session to review all three design concepts. Commission can merge, change, alter concepts to give the artist final direction before narrowing the mural to a single design.

September – Work Session to review final design. Minor alterations only at this point.

September – Artist finalizes alterations and discusses installation strategies with Rogue.

Installation on brewery extension will be completed after construction

## **CONCEPT ARTIST**

Rick Brown at NOAA Fisheries introduced me to Ardis deFreese who is currently an “Artist in Residence” at Hatfield who is staying the Port’s RV Park. Her website is [www.ardisdefreeseart.com](http://www.ardisdefreeseart.com).

Ardis and I discussed the project and she presented the following cost estimate:

Initial Ideas/Research: 3-8 hours  
Design Meetings: 1 - 3 hours  
Preliminary Sketches: 5 - 8 hours  
Review/Revise Content and Sketches: 6 - 10 hours  
Completed Drawings: 10 - 15 hours

Total hours: 25 - 44 at \$35 per hour = \$875 - \$1,540

## **BUDGET IMPLICATIONS**

The expense for the project would be capitalized as a South Beach improvement out of the General Fund Capital Outlay category.

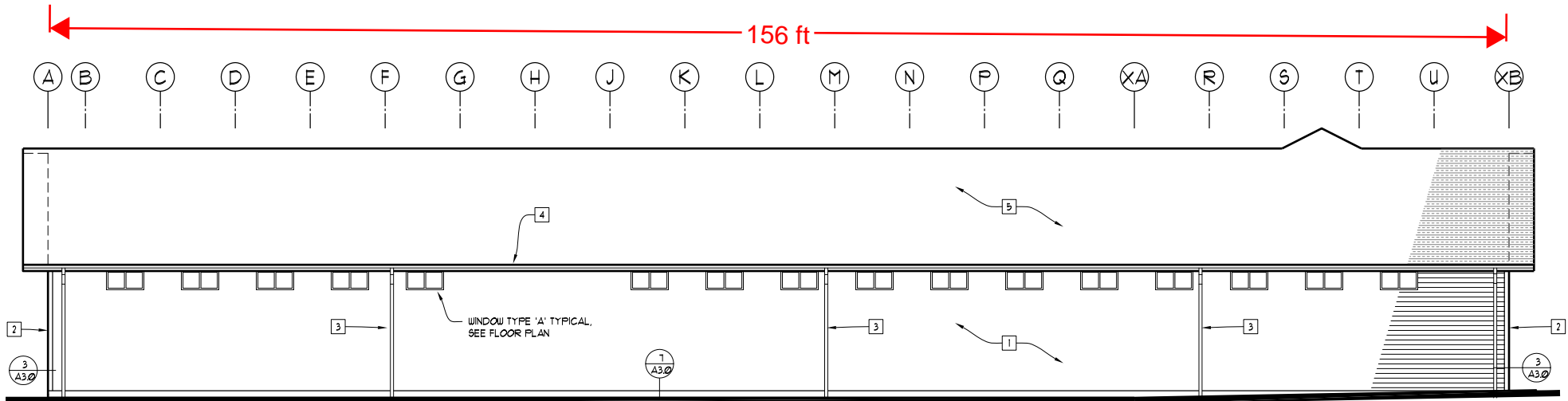
## **ALTERNATIVES**

The City’s Public Arts Committee has been willing to discuss the development of these concepts with me, and they are very interested in helping develop the mural. The above Scope of Work could continue or the Arts Committee could be asked for coming up with a different process.

## **NEXT STEPS**

Brainstorm concepts for consideration in the mural. Discuss other sources of information, inspiration and ideas for helping deFreese develop three concepts.

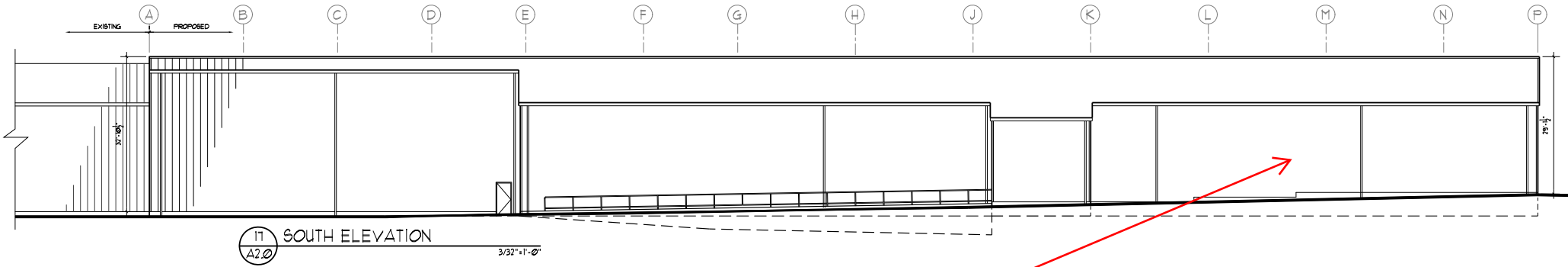
-###-



27 SOUTH ELEVATION  
 1/8" = 1'-0"



# Rogue Expansion Phase II - Mural Location



Approx Mural size  
95' x 18'

