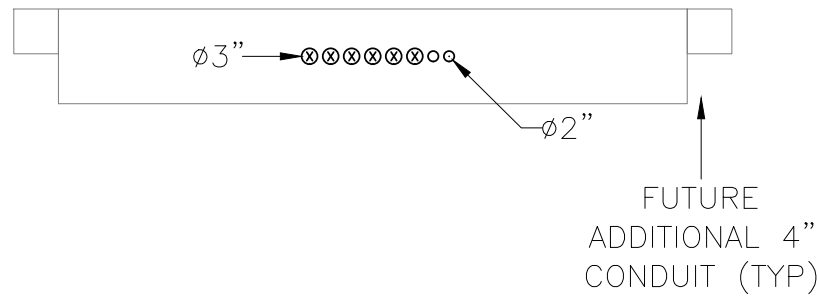
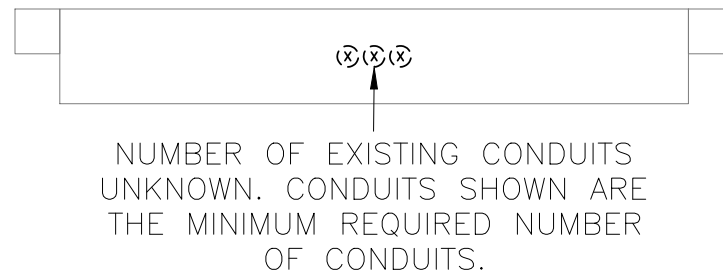


DIMENSIONS UNKNOWN



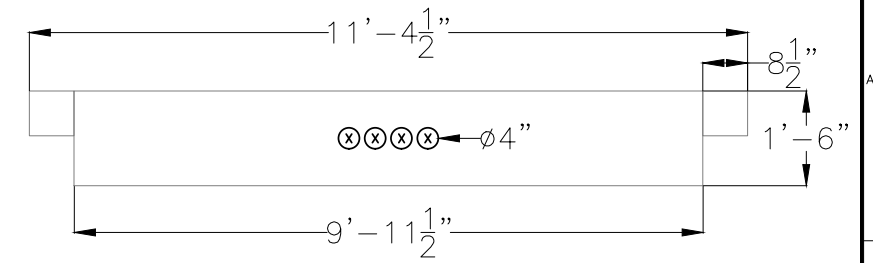
A DOCK 5 GANGWAY SECTION
RR1-E10-900

DIMENSIONS UNKNOWN



B DOCK 5A SECTION
PON-E10-900 (X)

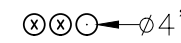
TYPICAL DIMENSIONS



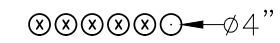
C DOCK 5B SECTION
PON-E10-900 (X)



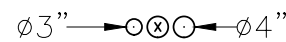
D DOCK 5C SECTION
PON-E10-900 (X)



E DOCK 5D SECTION
PON-E10-900 (X)




F DOCK 5X SECTION
PON-E10-900 (X)



G DOCK 3 SECTION
PON-E10-900 (X)

- KEY:**
- ⊗ CONDUIT USED FOR THIS PROJECT
 - CONDUIT NOT USED FOR THIS PROJECT
 - ⊗ ADDITIONAL CONDUIT OR PLACEMENT OF CONDUCTORS NEEDED FOR THIS PROJECT

THIS DOCUMENT IS THE PROPERTY OF ALLIANCE CONSULTING ENGINEERS LLC. IT IS FOR USE BY ALLIANCE CONSULTING ENGINEERS LLC IN THE CONSTRUCTION OF THIS PROJECT. NO OTHER USE IS PERMITTED WITHOUT THE EXPLICIT WRITTEN PERMISSION OF ALLIANCE CONSULTING ENGINEERS LLC. COPYRIGHT © 2025, ALLIANCE CONSULTING ENGINEERS LLC.

ELEC. REF. FILE:		DRAWN BY		ENGR BY		CHECKED BY		APVD BY		DRAWN BY		ENGR BY		CHECKED BY		APVD BY		CONCEPT			TITLE		SCALE		DRAWING No.		SHEET OF REV	
No.	DATE	No.	DATE	No.	DATE	No.	DATE	No.	DATE	No.	DATE	No.	DATE	No.	DATE	No.	DATE	NO SCALE	NO SCALE		NO.	NO.	NO.	NO.	NO.	NO.	NO.	NO.
.	FOR REVIEW	PORT OF NEWPORT		NO SCALE		PON-E24-910		1 1 A		
.	FOR BID	NEWPORT, OR		NO SCALE		PON-E24-910		1 1 A		
.	FOR MANUFACTURE	DOCK 5 & 3 RENOVATION		NO SCALE		PON-E24-910		1 1 A		
.	FOR CONSTRUCTION	DOCK DETAILS		NO SCALE		PON-E24-910		1 1 A		
.	FOR RECORD			NO SCALE		PON-E24-910		1 1 A		
.				NO SCALE		PON-E24-910		1 1 A		